

L2-CBA

Comm Bus Adapter, Panel to Panel, 2x10pin to 2xRJ45

The PDM Bus can extend from one panel to another. It follows standard RS-485 topology rules. The L2-CBA Comm Bus Adapter allows the 10-pin Comm connector at the top and bottom of the PDM to be transformed into an RJ45 jack. The RJ45 connectors allow the bus to extend longer distances.

CONNECTORS

PDM Comm Bus connectors (2) Female 10 pin
RJ-45 connectors Female 8 pin

RS485 CONTROL BUS

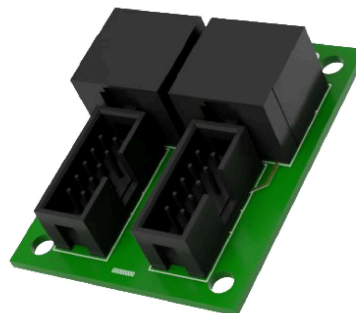
Communication Speed 38,400 bps
Maximum total bus length 2000ft (610m)
Maximum devices per PDMbus 100 across entire bus

PHYSICAL/ENVIRONMENTAL

Dimensions 3.5 x 2.75 x 1in (89 x 69 x 25mm)
Operating Temperature +32°F to +122°F (0°C to +50°C)
Operating Humidity 5% to 95% Non-condensing
Rating Dry Rated
Environmental RoHS
Safety Certifications CE, FCC

WARRANTY

Duration 5 Years



ORDERING INSTRUCTIONS:

PART ID	MODEL	DESCRIPTION
16020000.0	L2-CBA	Comm Bus Adapter, Panel to Panel, 2x10pin to 2xRJ45